

**New Product**

## Brush Tip Graining Markers

The new Brush Tip Graining Marker features a micro brush tip applicator. This revolutionary marker and tip allows you to apply color exactly where it is needed without any messy powders, fluids or odors. This is the perfect color tool for service technicians, shop technicians or factory line technicians.

The Brush Tip Graining Markers come ready to use. Simply stroke or dot on color where it's needed. To soften or blend the color, tap the color while it is wet with a clean cloth. Can be top coated with any of our Mohawk aerosols for extra protection. This is simply the easiest marker that you will ever use!

*Uses for the Brush Tip Graining Marker:*

- Use to add grain lines or alter the color of a *Fil-Stik® Putty Stick, Quick Fill® Burn-In Stick, PlaneStick® Burn-In Stick or E-Z Flow™ Burn-In Stick*
- Add color to small sand thru areas on a face or edges of a wooden part
- Add or alter color in any small defect



Available in 12 wood tone colors and two 6-pack assortments.  
See back for details!



Before graining



Graining



Graining complete



Damaged corner



Apply color



Repair is complete

To view our training video, scan this mobile barcode with your phone or visit us on YouTube at <http://www.youtube.com/watch?v=xPLKahDrYGE>



# Brush Tip Graining Marker Color Guide



M265-2000  
Raw Umber



M265-2001  
Dark Cherry



M265-2002  
Perfect Brown



M265-2003  
Dark Perfect Brown



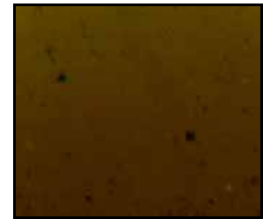
M265-2004  
Honey Spice



M265-2005  
Black



M265-2006  
Light Oak



M265-2007  
Van Dyke Brown



M265-2008  
Dark Brown  
Mahogany



M265-2009  
Burnt Umber



M265-2010  
Burnt Sienna



M265-2011  
Deep Brown  
Mahogany

M265-2201 Assortment includes M265-2000 through M265-2005

M265-2202 Assortment includes M265-2006 through M265-2011

## Features

- ✓ Micro brush tip applicator
- ✓ Complete 12 color palette
- ✓ Clear crisp colors that hold a thin line
- ✓ Low to no odor
- ✓ Easy to use, teach and learn
- ✓ Quick and easy application, no messy powders, extra brushes or liquids

## Benefits

- ✓ Makes this the easiest marker you will ever use to add color or grain
- ✓ You will have the colors needed to touch-up all basic wood tone colors
- ✓ You will be able to draw long or short grain lines
- ✓ You will be able to blend these markers better than any other markers
- ✓ You will be able to use this marker in any setting
- ✓ Little to no learning curve and anyone can use this marker successfully
- ✓ Very portable easy to carry with you on the job site